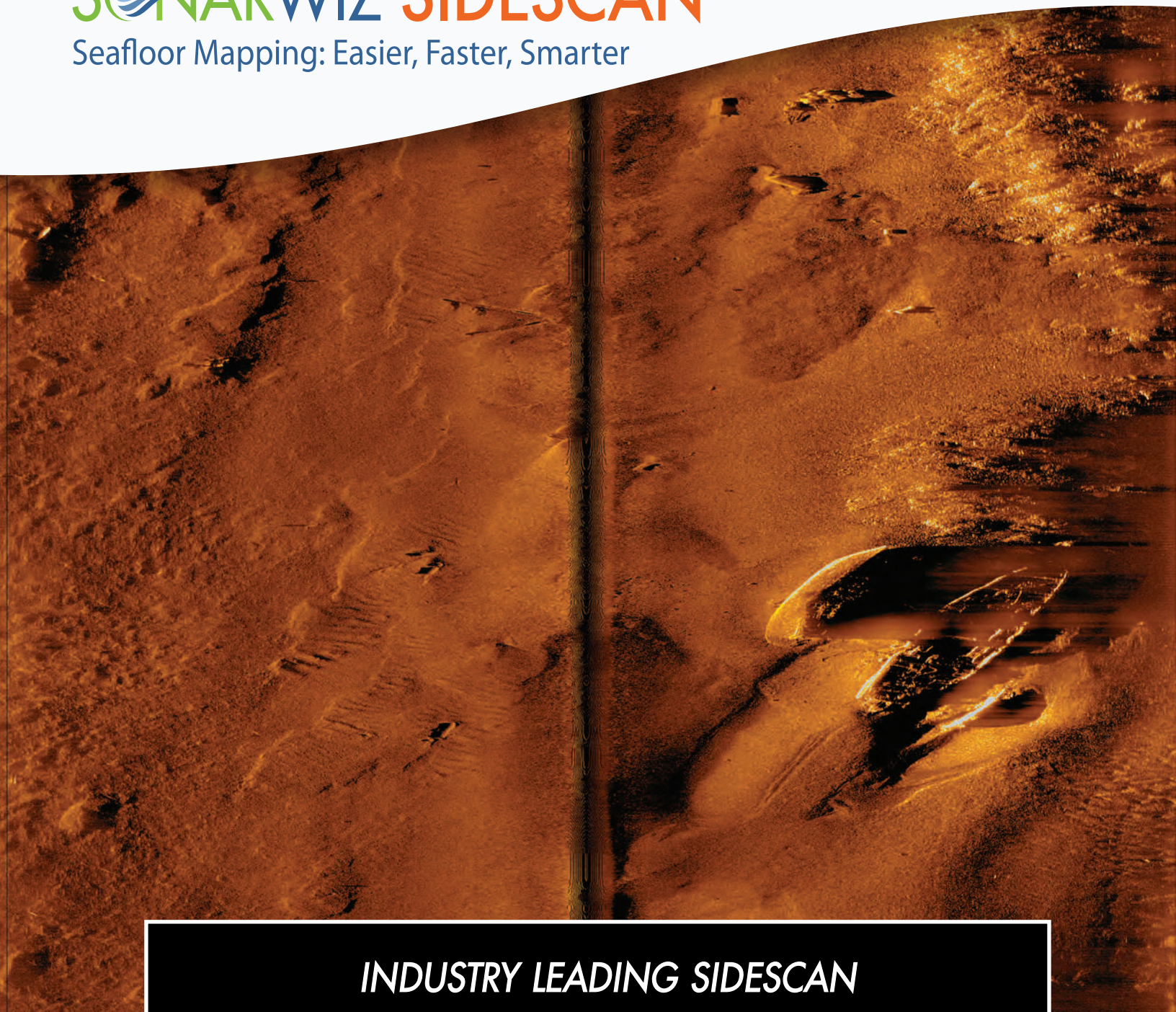





# SONARWIZ SIDESCAN

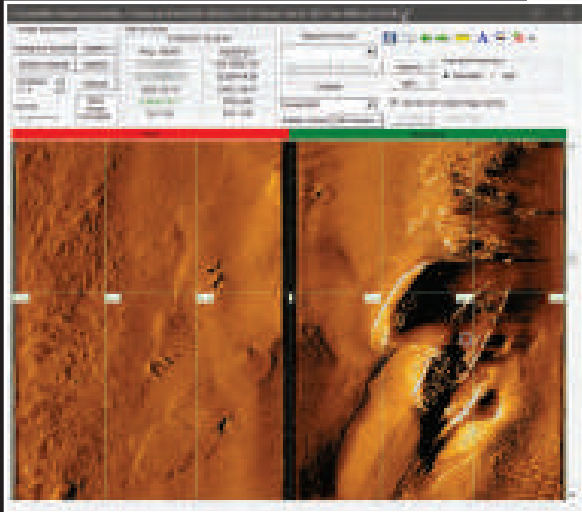
Seafloor Mapping: Easier, Faster, Smarter



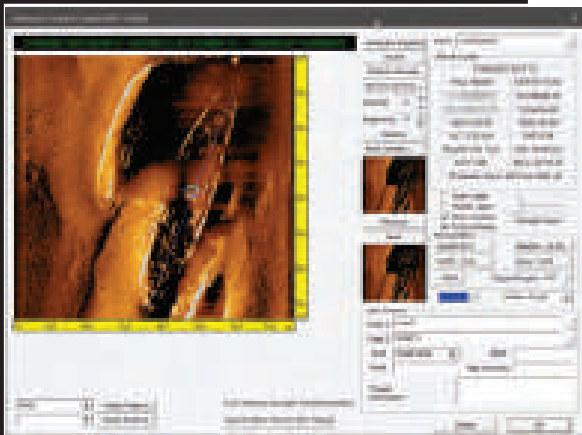
## *INDUSTRY LEADING SIDESCAN ACQUISITION AND SURVEY MANAGEMENT*

-  Designed from the ground up to support towed surveying
-  State of the art image processing algorithms
-  Powerful contact management and reporting system

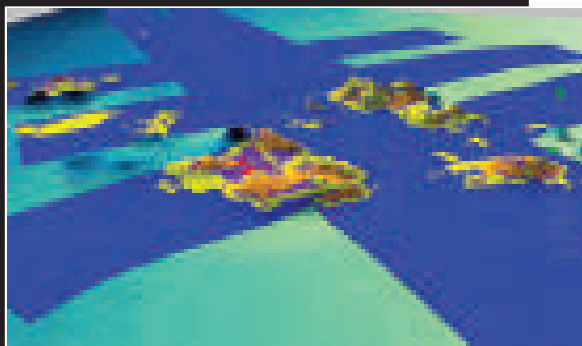
# SONARWIZ SIDESCAN



Powerful sidescan image processing features



Contact management designed to support commercial surveyors



Analyze image mosaics with the Seabed Characterization Tool

## CONTACT MANAGEMENT

Extensive contact management & reporting capabilities designed to support large sidescan surveys. Pick contacts in the waterfall or plan view windows and markers will appear throughout the program. Search for contacts in other track lines or rationalize multiple contacts into a single improved target. Build database queries on 30+ automatic and user-defined data fields. Update contact data when survey navigation is modified in post-processing. Export contacts as georeferenced images, MS Office reports, or GIS layers.

## DATA ACQUISITION

Lay out your lines and estimate survey timing with SonarWiz survey planning tools and send the plan to the remote helm display. Acquire sonar, navigation, fathometer data, payout meter and magnetometer data simultaneously. Configure the real time display options to display just the data you want, including sidescan and subbottom waterfalls, contact target strips, and fully processed, real-time mosaics

## POST PROCESSING

Powerful tools for correcting the navigation of towed sensors include manual editing & filtering, post-process navigation injection, & map corrections to multibeam ground truth. Advanced gain & signal processing filters to enhance target detection or prepare a sidescan survey for habitat classification. The Seabed Characterization Tool can segment acoustic imagery into homogeneous regions for sediment classification. Export corrected data to XTF or one of many supported GeoReferenced Image, GIS and CAD formats

## LICENSING

SonarWiz is modular and each component can be purchased separately, as an add-on, or as part of a Field or Office bundle. We offer dongle and dongle-free licensing (DFL) options. DFL licenses eliminate the risk of lost or stolen dongles and can be transferred between any two internet-connected PCs in seconds. Network and Academic options are also available.

## SUPPORTED INTERFACES

Atlas NA-Marine Sonic Arc Explorer, HDS, SeaSca; Analog 16-bit Sidescans (with analog box); C-Max CM2; EdgeTech 4125/4200, 4600/6205; Falmouth Scientific HMS-624, Swordfish; GeoAcoustics PulsAR, GSF, GeoPulse Compact; Imagenex SportScan, Yellowfin; Jetasonic; Klein 3000, 3900, 4900, 5000, 5900, DeepSled, MA-X 600; PingDSP 3DSS; R2Sonic 202X series; SyQuest Aquascan; Teledyne-Odom 1624; Trittech Starfish, Seaking

## FILE FORMATS

81S, 83P, 872, ALL, CM2, COD, DAT, GCF, H5, HSX, JSF, KMALL, LOGDOC, MST, RAW, RDF, RFF, QPD+DB, SDF, SDS, SES3, SL2, SL3, SMB, SXR, SWF8, TIL, XSE, XTF

## CUSTOMER FRIENDLY SUPPORT YOU CAN COUNT ON

- CUSTOM ONSITE TRAINING • WEBINARS • WORKSHOPS • TUTORIALS
- BI-WEEKLY PRODUCT UPDATES • 24/7 DOWNLOADS • FREE TRIALS

**CHESAPEAKE  
TECHNOLOGY**

[www.chesapeakeotech.com](http://www.chesapeakeotech.com)